

D

C

B

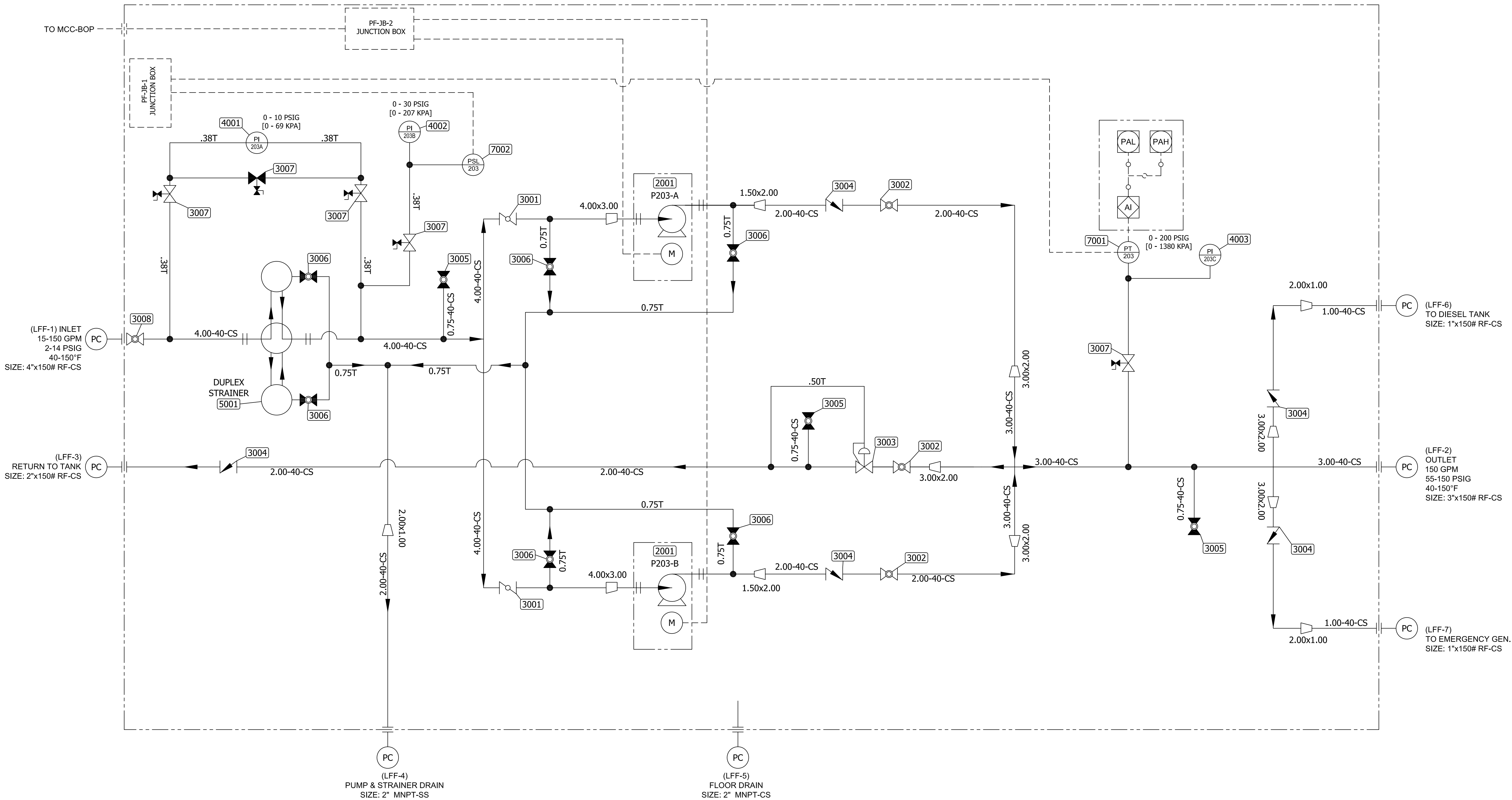
A

D

C

B

A



REV	DESCRIPTION	AUTHOR	DATE	CHECKED	QA/QC
2	CHG INLET BFV TO BV	S. Boerckel	02/24/2011	T. KOONTZ	B. MADDUX
1	CHG DISC PIPE 4" TO 3"	S. Boerckel	02/15/2011	T. KOONTZ	B. MADDUX
0	ISSUED FOR FABRICATION	S. Boerckel	01/27/2011	T. KOONTZ	B. MADDUX
REV	DESCRIPTION	AUTHOR	DATE	CHECKED	B QA/QC

REVISION HISTORY

© COPYRIGHT, 2009, PRO STEEL MANUFACTURING ALL RIGHTS RESERVED. THIS DRAWING IS THE PROPRIETARY AND/OR CONFIDENTIAL PROPERTY OF PRO STEEL MANUFACTURING AND IS LOANED IN STRICT CONFIDENCE WITH THE UNDERSTANDING THAT IT WILL NOT BE REPRODUCED NOR USED FOR ANY PURPOSE EXCEPT THAT FOR WHICH IT IS LOANED. IT SHALL BE IMMEDIATELY RETURNED ON DEMAND, AND IS SUBJECT TO ALL OTHER TERMS AND CONDITIONS OF ANY WRITTEN AGREEMENT OR PURCHASE ORDER WHICH INCORPORATES OR RELATES TO THIS DRAWING.

UNLESS OTHERWISE SPECIFIED	
DIMENSIONS ARE IN INCHES	
TOLERANCES ON	
DECIMALS	
X.X	± 0.10
X.XX	± 0.06
X.XXX	± 0.03
HOLE DIA	± 0.03
ANGLES	± 0.50°
SURFACE	✓ HFS-SF
SQUARENESS	± 0.06
DO NOT SCALE DRAWING	

DRAWN	S. Boerckel	01/27/2011
CHECKED	T. KOONTZ	02/03/2011
QA	B. MADDUX	02/03/2011
REVIEWER		
PROJECT NO	409-2956-1	
CUSTOMER	EDC - MARGARITA ISLAND	
JOB NO		

TITLE		P & ID SCHEMATIC	
UNIT NUMBERS 298034 & 298035		LIQUID FUEL FORWARDING SKID - 7EA	
SIZE	ML:	DWG NO	REV
D		409-2956-LFF7EA-0910-1	2
SCALE		SHEET 1	

